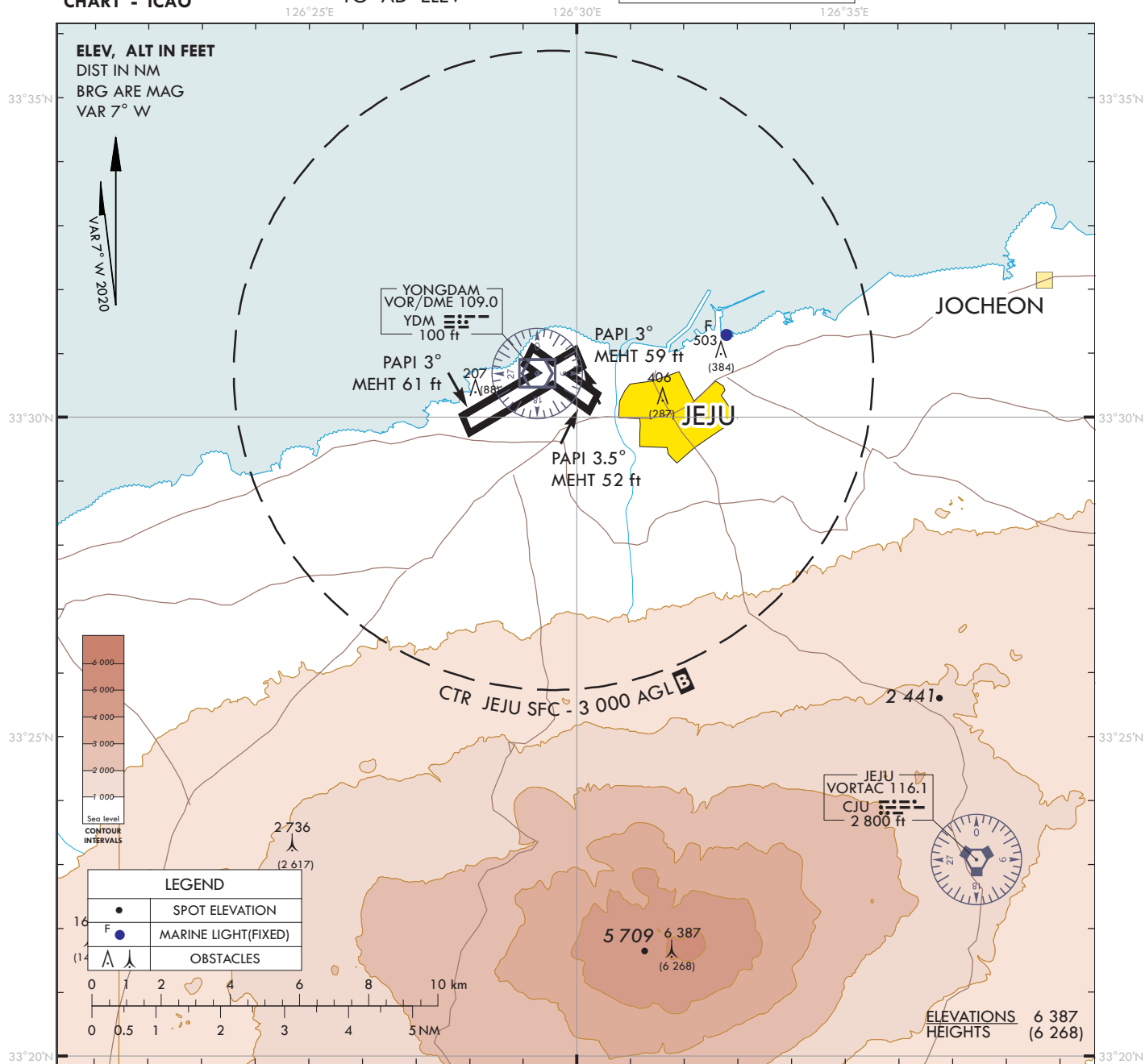


VISUAL
APPROACH
CHART - ICAO

AD ELEV 119 ft
HEIGHTS RELATED
TO AD ELEV

JEJU	APP	121.2	124.05
	DEP	119.225	
	TWR	118.2	118.55

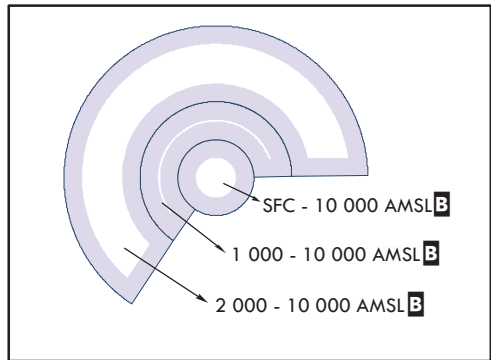
JEJU/Jeju Intl



VISUAL APPROACH PROCEDURE

- Visual approach may be initiated by ATC or approved upon pilot request on traffic permitting basis when :
 - Ceiling : At or above 500 ft plus MVA
 - Visibility : Not less than 3 SM
 - Remark : When conducting visual approach RWY 07, all arriving aircraft shall align the final approach course outside YDM 6 DME for noise abatement.

2. ATS airspace : Class B(Refer to ENR 2.2.-1)



Change : Page control.